

# eEMLock 1200

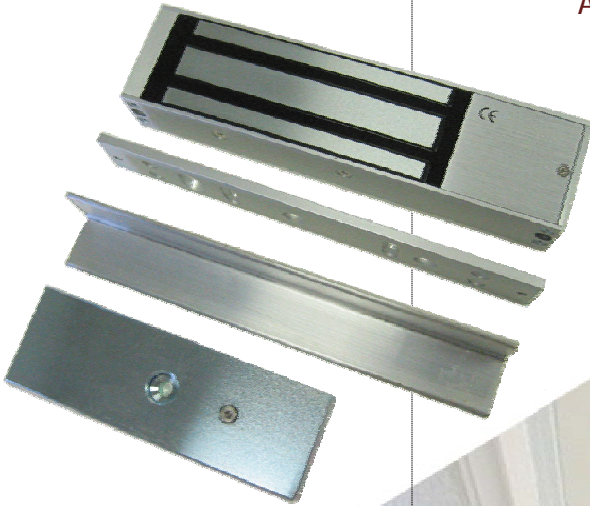
Universal high holding force electronic magnet lock. Built-in dual voltage & low current configuration.

**Application Type:**

- Aluminum frame door
- Glass door
- Metal door
- Wood door

**Including:**

- Mounting bracket



**Heavy Duty**  
**Reliable**  
**Powerful**

**Specification**

Holding Force: 1200 LBs+  
Operating Voltage: 12 / 24 VDC  
Current Draw: 500 mA / 12 VDC  
250 mA / 24 VDC

Application: Out-swing  
In-swinging

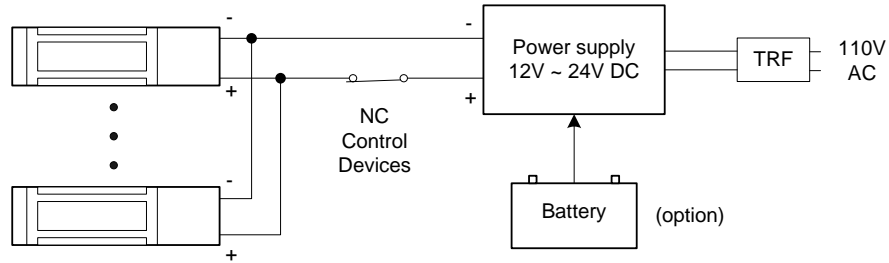
Dimension: 2 5/8" X 10 1/2" X 1 1/2"  
Weight: 10 LBs

**Accessories**

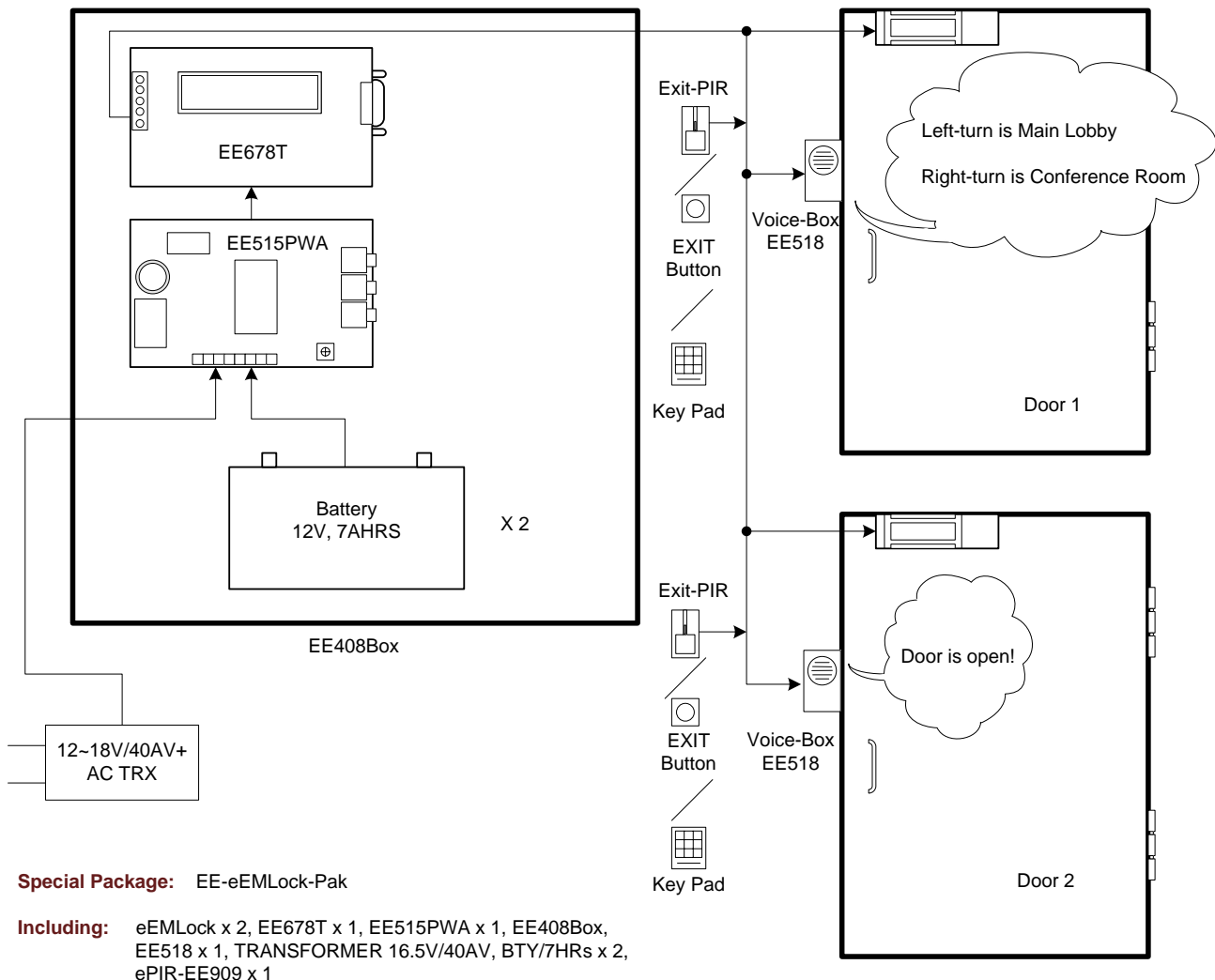
2-1

# eEMLock 1200

## Typical Application



## Example of Multiple Application



**Special Package:** EE-eEMLock-Pak

**Including:** eEMLock x 2, EE678T x 1, EE515PWA x 1, EE408Box, EE518 x 1, TRANSFORMER 16.5V/40AV, BTY/7HRs x 2, ePIR-EE909 x 1